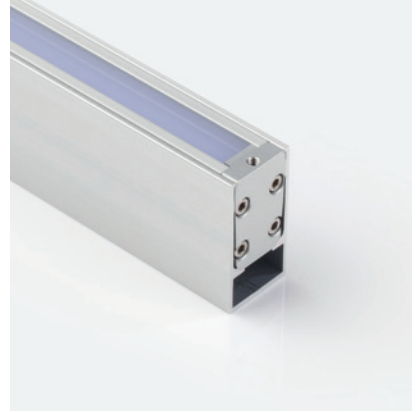




POKI 508 Fixture Guide



Outdoor | Surface | Mid output up to 580lm/m (177lm/ft)

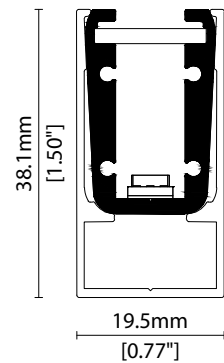


Key applications

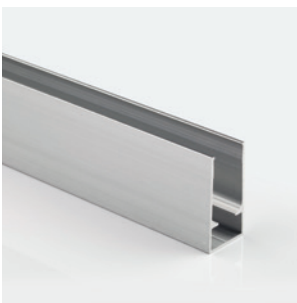
- ✓ Building façades
- ✓ Exterior
- ✓ Orientation lighting
- ✓ Public spaces
- ✓ Wall grazing
- ✓ Wall grazing
- ✓ Window Reveal

Key features

- ✓ Custom lengths
- ✓ Diffusion: Homogenous
- ✓ Direct view
- ✓ Extensive CCT range
- ✓ Form factor: Medium
- ✓ IP54
- ✓ IP67
- ✓ Output mid



MOUNTING METHODS



KKCR-02 Channel

Linear

POKI 508

Specification sheet



Dimension	H38.1/W19.5/L91.4-2020mm (H1.5/W0.77/L3.60-79.53in)
PCB increment	71.4mm increment/2000mm max (2.81in increment/78.74in max)
LED pitch	11.9mm - 84LED/m (0.47in - 26LED/ft)
Chip	s/e-line Toyoda Gosei k-line Samsung
Beam angle	30° (Clear Cover) / 80° (Diffused Cover)
Colours	s/e-line 2100K/2300K/2500K/2700K/3000K/3200K/3500K/4000K/5000K k-line 1900K/2100K/2500K/2700K/3000K/3500K/4000K/5000K
Bin/Step	s-line 2-step MacAdam ellipse e/k-line 3-step MacAdam ellipse
CRI	≥ 90
Lifetime	50,000 hours @ 25°C (50,000 hours @ 77°F)
Operating temp	T _a = -25 to 40°C (T _C max = 64.5°C) T _a = -13 to 104°F (T _C max = 148.1°F)
IP rating	IP54/IP67
Finish	Silver anodised
Cover/lens	Clear/Diffused
Mounting	Surface mounting via cable raceway
Power feed	Sheathed hardwire tails or male/female connectors
Control	0-10V/1-10V/DMX/DALI



LED Grading Key

Exclusive Grade

s s-line*	*KKDC tuned CCT range
e e-line*	3-step CCT range

Base Grade

k k-line	3-step commercial range Energy Star CCTs
------------------------	---

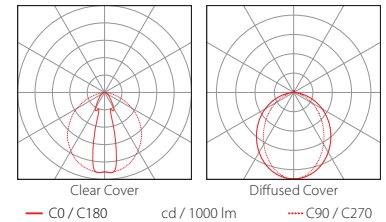
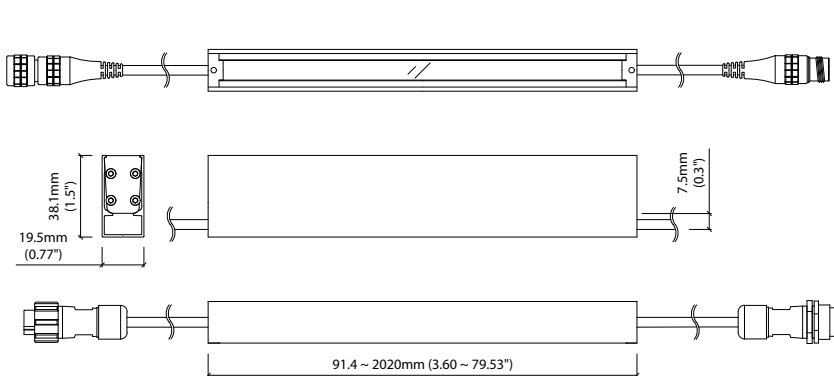
PERFORMANCE DATA @ 3000K

Power consumption	Supply voltage	Supply current
17.5W/m (5.33W/ft)	24V DC	0.73A/m (0.22A/ft)

Colour Rendering Index (CRI)

	R1	R2	R3	R4	R5	R6	R7	R8	R9	R10	R11	R12	R13	R14
k-line	94	97	98	93	93	96	92	83	60	93	94	82	95	99

	Clear Cover				Diffused Cover				CRI	R9	Rf	Rg
s/e-line	580lm/m (177lm/ft)	32.9lm/W	390lm/m (199lm/ft)	22.1lm/W	90	47	-	-				
k-line	500lm/m (152lm/ft)	28.3lm/W	340lm/m (104lm/ft)	19.4lm/W	92	60	-	-				



Data derived from independent UKAS / IESNA LM-79-08 accredited testing of production samples.

FIXTURE

Model	Finish	Cover	Grade*	LED	Colour (CCT)	Length Availability**	IP	Cable Length	Power Feed***	Input				
POKI PK	Silver Anodised SA	Clear B	s s	508	1900K ¹	19	m	300mm/11.81" 0300	Single ø4.3mm sheath tail	S00A	DC 24V g			
					2100K	21						91.4-2020mm 71.4mm increments	IP54 54	
		Diffused C	e e		2300K ¹	23	i		3.60-79.53in 2.81in increments	(Specify length code OR total run length)		IP67 ² 67	Double ø4.3mm sheath tail	D00A
					2500K	25								
					2700K	27							Single ø4.3mm sheath IP54 connector ^{3,4}	S54A
					3000K	30								
					3200K ¹	32							Double ø4.3mm sheath IP54 connector ^{3,4}	D54A
					3500K	35								
					4000K	40							Single ø4.3mm sheath IP67 connector ^{3,5}	S67A
					5000K	50								
								Double ø4.3mm sheath IP67 connector ^{3,5}	D67A					

¹ 1900K is only available in k-line, 2300K & 3200K are only available in s/e-line ³ IP rated connectors do not fit inside the cable raceway

⁴ Only available for IP54

² Due to the clear, flush potted polyurethane top layer on IP67 POKI a colour shift of +/-20K should be expected

⁵ Only available for IP67

* Refer to **LED Grading Key** on **Specification sheet** page

** Refer to **Length Availability List** or enter total run length instead of length code

*** Refer to **Power Feed Options** on **Options** pages

Code Example:

PK	-	SA	-	C	-	s	-	508	-	35	-	m	-	520	-	67	-	0300	-	D67A	-	g
POKI		Silver Anodised		Diffused		s		508		3500K		m		519.8mm		IP67		300mm/11.81"		Double ø4.3mm sheath IP67 connector		DC 24V

ACCESSORIES

Mounting Accessories

KKCR-02 Channel

* Refer to **Mounting options** on **Accessories** pages

Connection Accessories

CN54-2P-0300 IP54 2 PIN male & female 300mm/11.81" pair
CN67-2P-1000 IP54 2 PIN male & female 1000mm/39.37" pair
CN67-2P-0300 IP67 2 PIN male & female 300mm/11.81" pair
CN67-2P-1000 IP67 2 PIN male & female 1000mm/39.37" pair
CN67-2P-3000 IP67 2 PIN male & female 3000mm/118.11" pair

* Refer to **Power feed** on **Accessories** pages

Exterior Junction Boxes

KKJB-07 IP67 Slim J-Box
KKJB-07R Potting Resin for IP67 Slim J-Box

* Refer to **Exterior Junction Boxes** on **Accessories** pages

PSU/Driver

0-10V/1-10V/Dali/DMX

* Refer to **Driver/PSU Options** page for details or provide requirement and KKDC to offer the suitable option

LED ENGINE VARIANTS (LED STRIP TYPE)

Colour	Output	LED	Lumen/m	Lumen/ft	W/m	W/ft	Spec Doc	Length	Increment
Single CCT	Low	352	160	50	5.5	1.67	POKI 352	103.3-2020mm/4.07-79.53in	83.3mm/3.28in
	Low	504	420	128	12.5	3.81	POKI 504	120-2020mm/4.72-79.53in	100mm/3.94in
	Mid	508	580	177	17.5	5.33	POKI 508	91.4-2020mm/3.60-79.53in	71.4mm/2.81in
Warm Dim/Dynamic White	Low	207	290	86	11	3.35	POKI 207	103.3-2020mm/4.07-79.53in	83.3mm/3.28in
	Low	208	510	171	15.6	4.75	POKI 208	186.7-2020mm/7.35-79.53in	166.7mm/6.56in
RGB		501	Red 50 Green 107 Blue 18 RGB 155	Red 15 Green 33 Blue 5 RGB 47	15.6	4.75	POKI RGB	103.3-2020mm/4.07-79.53in	83.3mm/3.28in

* Performance data: s/e-line, clear cover, 3000K

POKI 508

Length Availability List

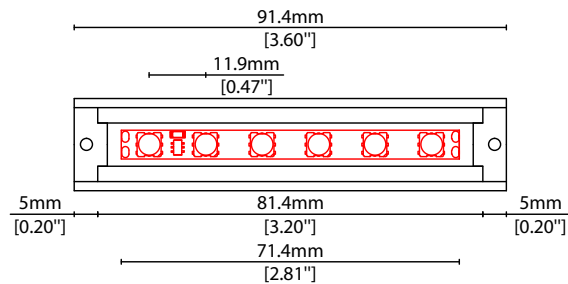


Length Code		Fixture Length ¹		LED Strip ²		End Cap Dimension ³		Wattage (W)	Output (lm)	
Metric	Imperial(US)	Metric	Imperial(US)	Metric	Imperial(US)	Metric	Imperial(US)		3000K (Test Data)	Range Data
m0091	i0004	91mm	3.60in	71mm	2.81in	10mm	0.39in	1.25	37	20-39
m0163	i0006	163mm	6.41in	143mm	5.62in	10mm	0.39in	2.50	74	41-77
m0234	i0009	234mm	9.22in	214mm	8.44in	10mm	0.39in	3.75	111	61-116
m0306	i0012	306mm	12.04in	286mm	11.25in	10mm	0.39in	5.00	149	82-154
m0377	i0015	377mm	14.85in	357mm	14.06in	10mm	0.39in	6.25	186	102-193
m0448	i0018	449mm	17.66in	429mm	16.87in	10mm	0.39in	7.50	223	122-232
m0520	i0020	520mm	20.47in	500mm	19.69in	10mm	0.39in	8.75	260	143-270
m0591	i0023	591mm	23.29in	571mm	22.50in	10mm	0.39in	10.00	297	163-309
m0663	i0026	663mm	26.10in	643mm	25.31in	10mm	0.39in	11.25	334	184-347
m0734	i0029	734mm	28.91in	714mm	28.12in	10mm	0.39in	12.50	371	204-386
m0806	i0032	806mm	31.72in	786mm	30.93in	10mm	0.39in	13.75	408	224-425
m0877	i0035	877mm	34.53in	857mm	33.75in	10mm	0.39in	15.00	446	245-463
m0948	i0037	949mm	37.35in	929mm	36.56in	10mm	0.39in	16.25	483	265-502
m1020	i0040	1020mm	40.16in	1000mm	39.37in	10mm	0.39in	17.50	520	286-541
m1091	i0043	1091mm	42.97in	1071mm	42.18in	10mm	0.39in	18.75	557	306-579
m1163	i0046	1163mm	45.78in	1143mm	45.00in	10mm	0.39in	20.00	594	326-618
m1234	i0049	1234mm	48.59in	1214mm	47.81in	10mm	0.39in	21.25	631	347-656
m1306	i0051	1306mm	51.41in	1286mm	50.62in	10mm	0.39in	22.50	668	367-695
m1377	i0054	1377mm	54.22in	1357mm	53.43in	10mm	0.39in	23.75	705	388-734
m1448	i0057	1449mm	57.03in	1429mm	56.24in	10mm	0.39in	25.00	743	408-772
m1520	i0060	1520mm	59.84in	1500mm	59.06in	10mm	0.39in	26.25	780	428-811
m1591	i0063	1591mm	62.66in	1571mm	61.87in	10mm	0.39in	27.50	817	449-849
m1663	i0065	1663mm	65.47in	1643mm	64.68in	10mm	0.39in	28.75	854	469-888
m1734	i0068	1734mm	68.28in	1714mm	67.49in	10mm	0.39in	30.00	891	490-927
m1806	i0071	1806mm	71.09in	1786mm	70.31in	10mm	0.39in	31.25	928	510-965
m1877	i0074	1877mm	73.90in	1857mm	73.12in	10mm	0.39in	32.50	965	530-1004
m1948	i0077	1949mm	76.72in	1929mm	75.93in	10mm	0.39in	33.75	1002	551-1042
m2020	i0080	2020mm	79.53in	2000mm	78.74in	10mm	0.39in	35.00	1040	571-1081

¹ Actual total overall length of light fixture (LED strip + end caps + void/wire hole)

² Actual length of PCB strip

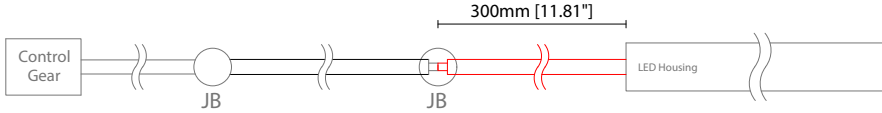
³ Actual length of 2x end caps



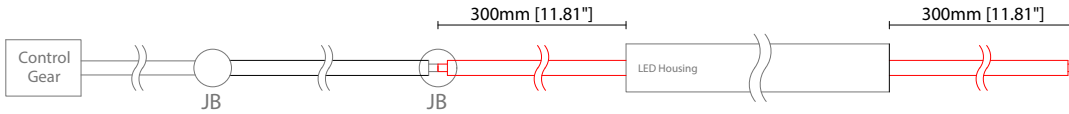
POWER FEED OPTIONS

* Options are an integral part of the fixture ordering codes. Please refer to **Code Table** pages.

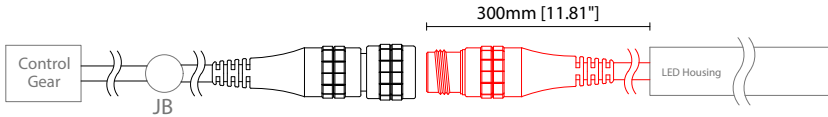
0300 S00A 300mm (11.81") Single \varnothing 4.3mm sheath tail



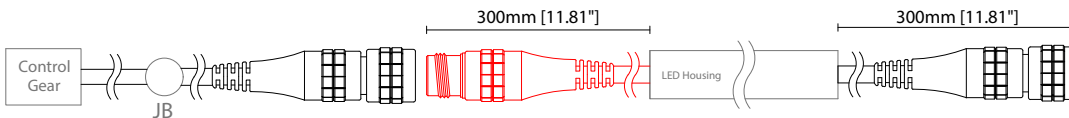
0300 D00A 300mm (11.81") Double \varnothing 4.3mm sheath tail



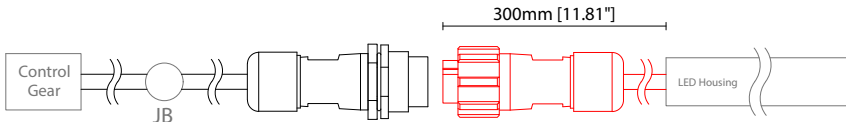
0300 S54A 300mm (11.81") Single \varnothing 4.3mm sheath IP54 connector



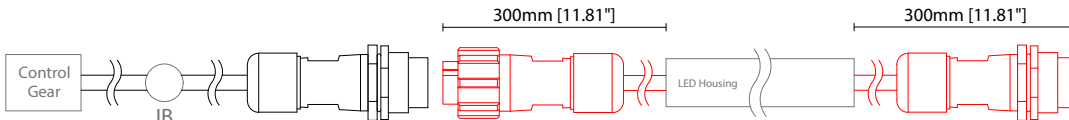
0300 D54A 300mm (11.81") Double \varnothing 4.3mm sheath IP54 connector



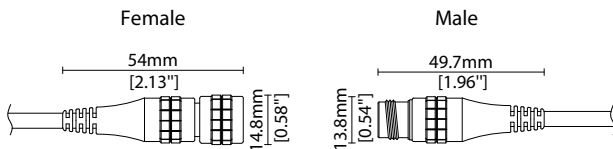
0300 S67A 300mm (11.81") Single \varnothing 4.3mm sheath IP67 connector



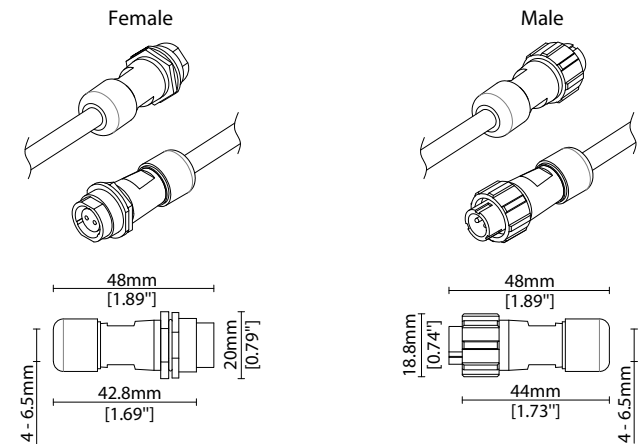
0300 D67A 300mm (11.81") Double \varnothing 4.3mm sheath IP67 connector



IP54 2 Pin Connector



IP67 2 Pin Connector



Key

Control Gear Power supply, sub-controllers & control systems

JB Junction box / cable connection

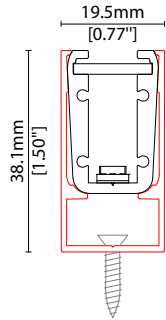
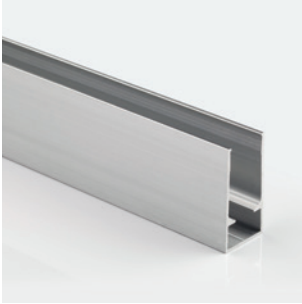
Linear

POKI 508 Accessories



MOUNTING OPTIONS

Note: Accessories are to be ordered separately with corresponding code shown below.



KKCR-02*

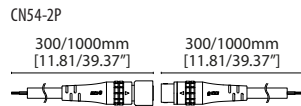
Channel
Anodised aluminium finish

* Specify length to match POKI

POWER FEED



IP54



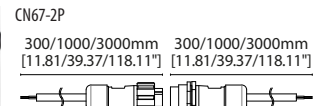
CN54-2P-0300 300mm (11.81in) pair
CN54-2P-1000 1000mm (39.37in) pair

IP54

2 PIN male + female connector set



IP67



CN67-2P-0300 300mm (11.81in) pair
CN67-2P-1000 1000mm (39.37in) pair
CN67-2P-3000 3000mm (118.11in) pair

IP67

2 PIN male + female connector set

EXTERIOR JUNCTION BOXES



KKJB-07

IP67 Slim J-Box
(including type A,B,C,D bushings)



KKJB-07R

Potting resin for IP67 Slim J-Box

KKDC CONTROL



IP20
Black plastic housing
L164/W64/H34mm
(L6.46/W2.52/H1.34in)

KKDM-05 1-10V
visDIM dimmable sub-controller



IP20
Black plastic housing
L164/W64/H34mm
(L6.46/W2.52/H1.34in)

KKSC-03A DMX (screw terminal)
visDIM dimmable sub-controller



IP20
Black plastic housing
L164/W64/H34mm
(L6.46/W2.52/H1.34in)

KKSC-03B DMX (RJ45)
visDIM dimmable sub-controller



IP20
Plastic housing
L170/W59/H29mm
(L6.69/W2.32/H1.14in)

KKDL-02 DALI
visDIM dimmable sub-controller
(4 x 8A max @ 12-36V)



IP20
Plastic housing
L166/W53.4/H23mm
(L6.54/W2.10/H0.91in)

KKDL-03 DALI
visDIM dimmable sub-controller
(4 x 5A max @ 12-36V)

AVAILABLE PSU OPTIONS

Control Mode	PSU (Order Code)	Input Voltage AC	Output Voltage DC	Rated Output Current	Rated Power	Dim %	IP Rating
Switched	CEN-60-24	90-295V	24V	2.5A	60W	-	IP67
	HLG-60H-24	90-305V	24V	2.5A	60W	-	IP67
	HLG-100H-24	90-305V	24V	4.0A	100W	-	IP67
	HLG-150H-24	90-305V	24V	6.3A	150W	-	IP67
	HLG-240H-24	90-305V	24V	10A	240W	-	IP67
0-10V (1-10V)	PWM-40-24	90-305V	24V	1.67A	40W	100-0.15 (100-10)	IP67
	PWM-60-24	90-305V	24V	2.5A	60W	100-0.15 (100-10)	IP67
	PWM-90-24	90-305V	24V	3.67A	90W	100-0.15 (100-10)	IP67
	PWM-120-24	90-305V	24V	5.0A	120W	100-0.15 (100-10)	IP67
DALI	LIN100A1	120-277V	24V	1A per channel	100W	100-0.1	IP66/IP40
DMX RGB	LIN100A1	120-277V	24V	1.33A per channel	100W	100-0.1	IP66/IP40
DMX RGBW	LIN100A1	120-277A	24V	1A per channel	100W	100-0.1	IP66/IP40

Flicker Free Options - Combination of PSU+ sub-controller

Control Mode	PSU (Order Code)	Sub-controller (Order Code)	Input Voltage AC	Output Voltage DC	Rated Output Current	Rated Power	Dim %	IP Rating PSU/ Sub-controller
0-10V or 1-10V	CEN-60-24	KKDM-05	90-295V	24V	2.5A	60W	100-0.9	IP67/IP20
	HLG-60H-24	KKDM-05	90-295V	24V	2.5A	60W	100-0.9	IP67/IP20
	HLG-100H-24	KKDM-05	90-295V	24V	4.0A	100W	100-0.9	IP67/IP20
	HLG-150H-24	KKDM-05	90-295V	24V	6.3A	150W	100-0.9	IP67/IP20
	HLG-240H-24	KKDM-05	90-295V	24V	10.0A	240W	100-0.9	IP67/IP20
DALI	CEN-60-24	KKDL-02/03	90-295V	24V	2.5A	60W	100-0.1	IP67/IP20
	HLG-60H-24	KKDL-02/03	90-305V	24V	2.5A	60W	100-0.1	IP67/IP20
	HLG-100H-24	KKDL-02/03	90-305V	24V	4.0A	100W	100-0.1	IP67/IP20
	HLG-150H-24	KKDL-02/03	90-305V	24V	6.3A	150W	100-0.1	IP67/IP20
	HLG-240H-24	KKDL-02/03	90-305V	24V	10.0A	240W	100-0.1	IP67/IP20
DMX RGB	CEN-60-24	KKSC-03	90-295V	24V	2.5A	60W	100-0.9	IP67/IP20
	HLG-60H-24	KKSC-03	90-305V	24V	2.5A	60W	100-0.9	IP67/IP20
	HLG-100H-24	KKSC-03	90-305V	24V	4A	100W	100-0.9	IP67/IP20
	HLG-150H-24	KKSC-03	90-305V	24V	6.3A	150W	100-0.9	IP67/IP20
	HLG-240H-24	KKSC-03	90-305V	24V	10.0A	240W	100-0.9	IP67/IP20

¹ The items shown above cover the most frequently used specification but does not exhaust the possible options

² PSU and/or driver can be chosen from the table, or KKDC may recommend the best option upon receipt of the controls requirement and installation environment

³ Electrical shop drawing will include detailed information of PSU and relevant control drivers

⁴ Cut sheets are available on the controls section of www.kkdc.lighting or upon request