

General

KOH 40-R High Power Fixture Guide

KKDÖ

Indoor | Recessed | Max output up to 2190lm

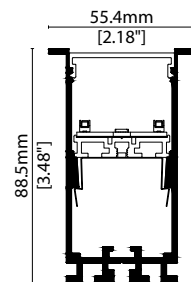


Key applications

- ✓ Ceiling
- ✓ Office lighting
- ✓ Downlighting
- ✓ Wall grazing
- ✓ Interior

Key features

- ✓ Control Gear
- ✓ Custom lengths
- ✓ Decorative
- ✓ Diffusion: Homogenous
- ✓ Direct view
- ✓ Extensive CCT range
- ✓ Form factor: Large
- ✓ High lumen efficacy
- ✓ IP40
- ✓ Lensed
- ✓ Output max



MOUNTING METHODS

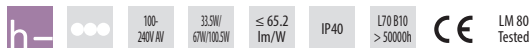


KJKT-03 Joining bar



KKBK-19 Fixing bracket

KOH 40-R High Power Specification sheet



Dimension	H88.5/W55.4/L584-1704mm (H3.48/W2.18/L22.99-67.09in)
Unit length	560/1120/1680mm (22.05/44.09/66.14in)
Chip	h-line Lumileds
Beam angle	10°/20°/30°lens
Colours	h-line 2700K/3000K (90CRI)/3500K/4000K/5000K (80CRI)
Bin/Step	h-line 3-step MacAdam Ellipse (4-step @5000K)
CRI	≥ 80 (≥ 90 @2700K, 3000K)
Lifetime	50,000 hours @ 25°C (50,000 hours @ 77°F)
Operating temp	T _a = -20 to 45°C (T _c max = 62.9°C) T _a = -4 to 113°F (T _c max = 154.2°F)
IP rating	IP40
Finish	Matt Silver/Grey/White/Black/Bronze Powder Coated
Cover/lens	Louvre + (Frosted Cover/10°/20°/30°/Spread Lens)
Mounting	Recessed mounting via bracket
Power feed	Male/female connectors
Control	0-10V/DALI (Integrated Power Supply)



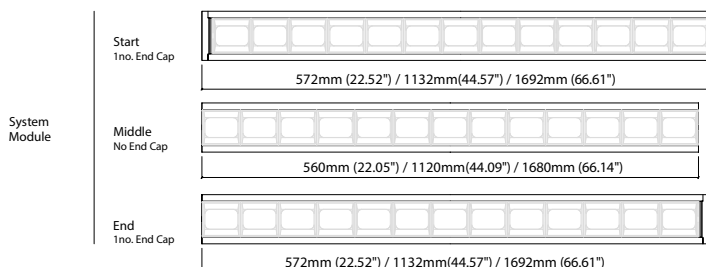
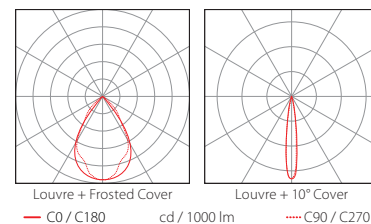
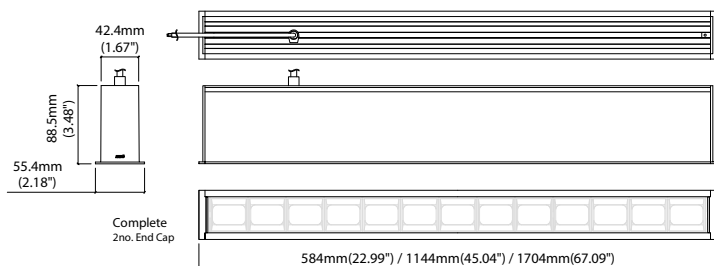
LED Grading Key

Exclusive Grade		<i>*KKDC tuned</i>
h-line*	Constant Voltage Lensed High Power LED	CCT range
	3-step CCT range	
	(4-step for 5000K)	

PERFORMANCE DATA @ 3000K / @ 580MM COMPLETE MODULE (22.84IN)

Power consumption	Supply voltage	Supply current	Power factor
33.5W	240V AC 50Hz	0.14A	0.95 @ 239.99V, 50Hz

	Louvre + Frosted Cover	Louvre + 10° Lens	Louvre + 20° Lens	Louvre + 30° Lens	Louvre + Spread Lens	CRI	R9	Rf	Rg
h-line	870lm 27lm/W	2190lm 65.2lm/W	2150lm 64.1lm/W	1890lm 56.4lm/W	810lm 24.1lm/W	94	74	92	102



Data derived from independent UKAS/IESNA LM-79-08 accredited testing of production samples.

KOH 40-R High Power

Code Table



FIXTURE

Model	Finish	Cover	Grade	LED Type*	Colour (CCT)	Length Availability**	Lens	Module Type ²	Control Type	Input
KOH 40-R	Matt White Paint	MW	h	High Power	2700K ¹	580mm	Frosted lens	Complete	0-10V	AC 100V
	Matt Silver Paint	MS			3000K ¹	1140mm	10°	Start	DALI	AC 220-240V
	Matt Grey Paint	MG			3500K	1700mm	20°	Middle	No Controller	No PSU
	Matt Black Paint	MB			4000K	22.05in	30°	End		
	Bronze Paint	BP			5000K	44.09in	Spread lens			
					66.14in					

¹ 2700K/3000K – 90CRI

² Module Type (various fixture lengths)

Complete	FE	
Start	LE	
Middle	XE	
End	RE	

* Refer to **LED Grading Key** on **Specification sheet** page

** Refer to **Length Availability List** or enter total run length instead of length code

Code Example:

GB	-	MW	-	Q	-	h	-	957A	-	30	-	m	-	1140	-	30	-	FE	-	4	-	d
KOH 40-R		Matt White Paint		Louvre		h		High Power		3000K		m		1140mm		30°		Complete		0-10V		AC 220-240V

ACCESSORIES

Mounting Accessories

KKJT-03	Joining Bar
KKBK-19	Fixing bracket

* Refer to **Mounting options** on **Accessories** pages

Connection Accessories

KKCN-26	Power Feed Cable
---------	------------------

* Refer to **Power feed** on **Accessories** pages

PSU/Driver

0-10V/DALI (Integrated Power Supply)

LED ENGINE VARIANTS (LED STRIP TYPE)

Colour	Output	LED	Lumen/module	Wattage	Spec Doc	Length
Single CCT	Mid	532B	850/module	18.5	KOH 40-R Full Spectrum	560/1120/1680mm (22.05/44.10/66.14in)
	Max	630A	1170/module	17.5	KOH 40-R High CRI	560/1120/1680mm (22.05/44.10/66.14in)
	Mid	957A	2190/module	33.5	KOH 40-R High Power	560/1120/1680mm (22.05/44.10/66.14in)

* Performance data: h-line, louvre + 10° lens, 3000K, 580mm module

KOH 40-R High Power Length Availability List



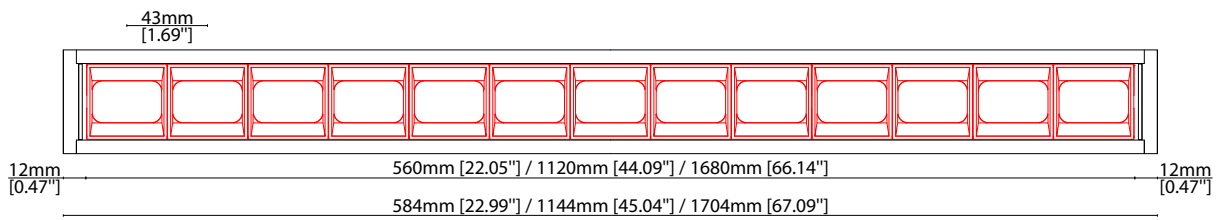
KOH 40-R High Power

Length Code		Fixture Length ¹		LED Strip ²		End Cap Dimension ³		Wattage (W)	Output (lm)	
Metric	Imperial(US)	Metric	Imperial(US)	Metric	Imperial(US)	Metric	Imperial(US)		3000K (Test Data)	Range Data
m0584	i0023	584mm	22.99in	560mm	22.05in	14mm	0.55in	33.5	2184	646-2272
m1144	i0045	1144mm	45.04in	1120mm	44.09in	14mm	0.55in	67	4368	1292-4543
m1704	i0067	1704mm	67.09in	1680mm	66.14in	14mm	0.55in	100.5	6553	1938-6815

¹ Actual total overall length of light fixture (LED strip + end caps + void/wire hole)

² Actual length of PCB strip

³ Actual length of 2x end caps



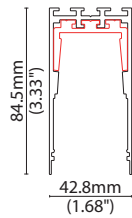
MOUNTING OPTIONS

Note: Accessories are to be ordered separately with corresponding code shown below.



KKJT-03

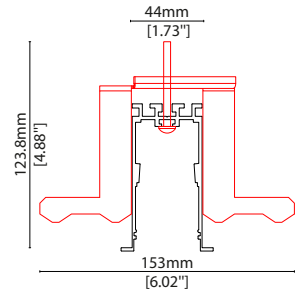
Joining bar
(allow 1 per join)



KKBK-19

Fixing bracket
(allow 2 per metre/40in)

S/Steel finish



POWER CABLE

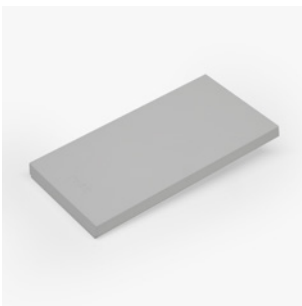


KKCN-26

KKCN-26

Power feed cable

END CAPS AND LIGHT LEAK TAPE



- KKEC-S1 (2no.)** - End cap pair (Mat white)
- KKEC-S2 (2no.)** - End cap pair (Mat silver)
- KKEC-S3 (2no.)** - End cap pair (Mat gray)
- KKEC-S4 (2no.)** - End cap pair (Mat black)
- KKEC-S5 (2no.)** - End cap pair (Bronze)



Black tape (prevents light leak)